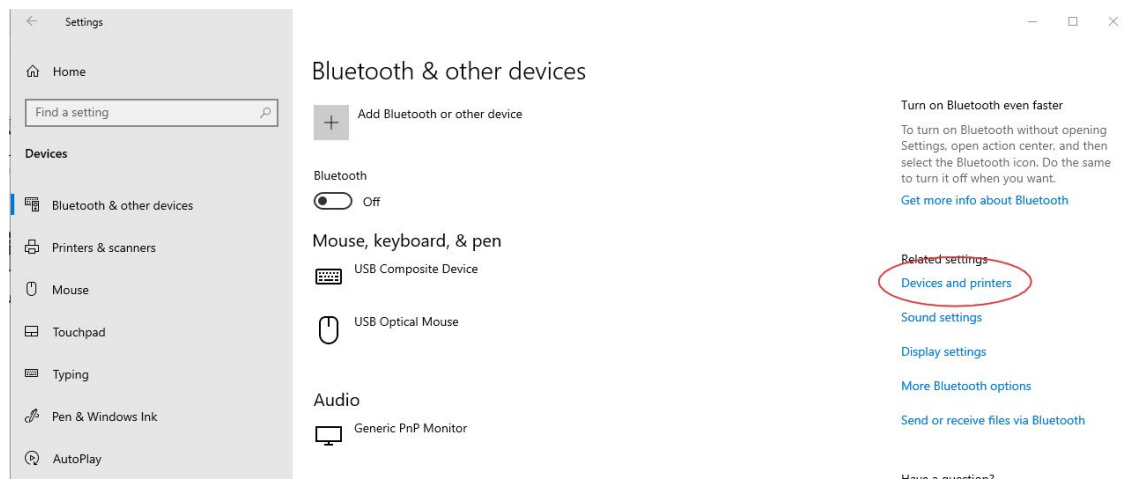


Liftoff - Windows 10 - Reinstall Remote USB Driver

Due to a Windows 10 update that affects drivers of USB devices, some remotes may no longer be recognized in Liftoff. To get your remote working again, you can attempt the following steps.

1. **Open your Windows 10 devices menu through the Settings screen.**
2. **Click the 'Devices and Printers' link.**



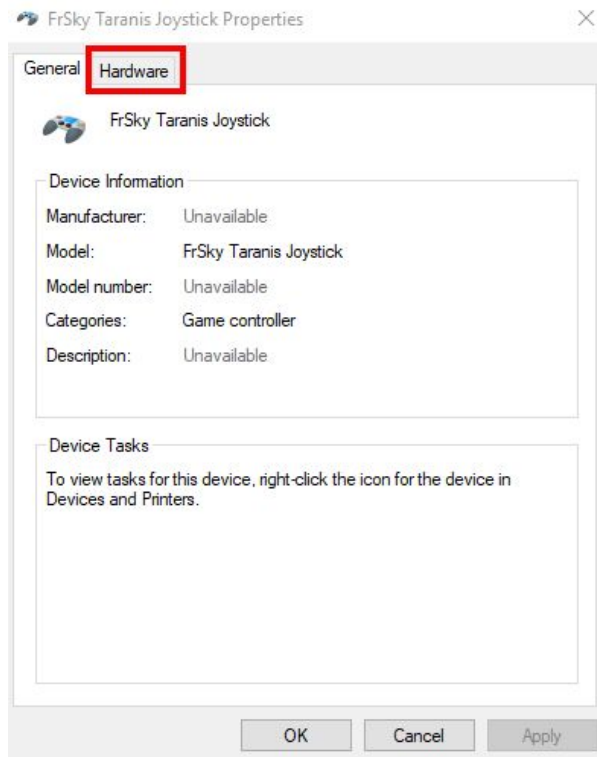
3. **Make sure that your remote is detected by looking for the icon and name that best represents your remote. In our case that's the FrSky Taranis.**



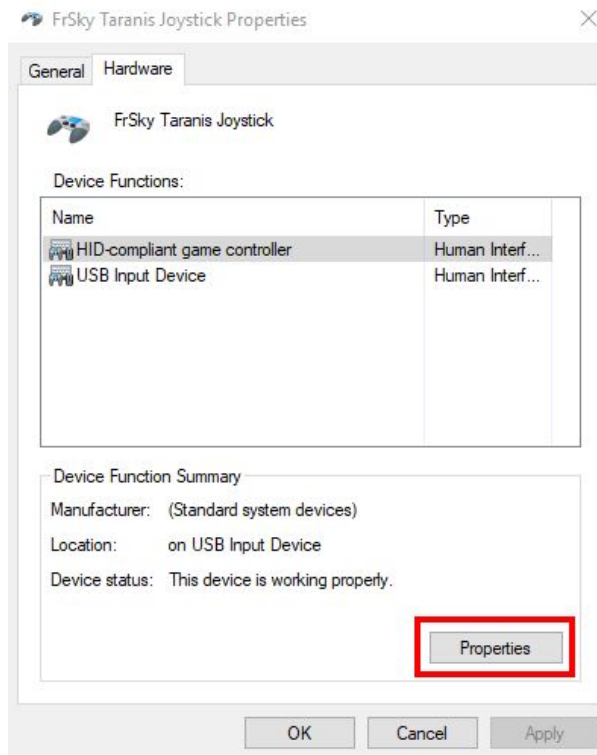
FrSky Taranis Joystick

4. **Right-click on it and select 'Properties'.**

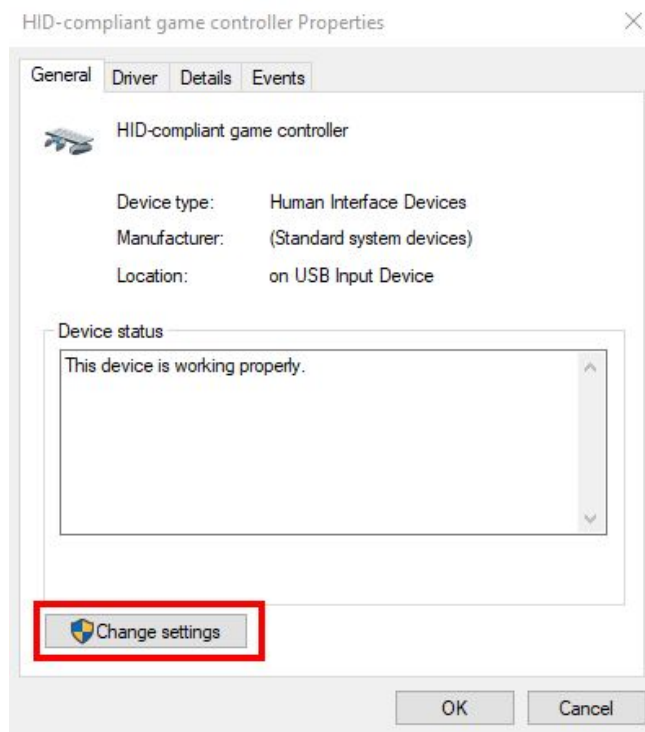
5. Click the “Hardware” tab at the top



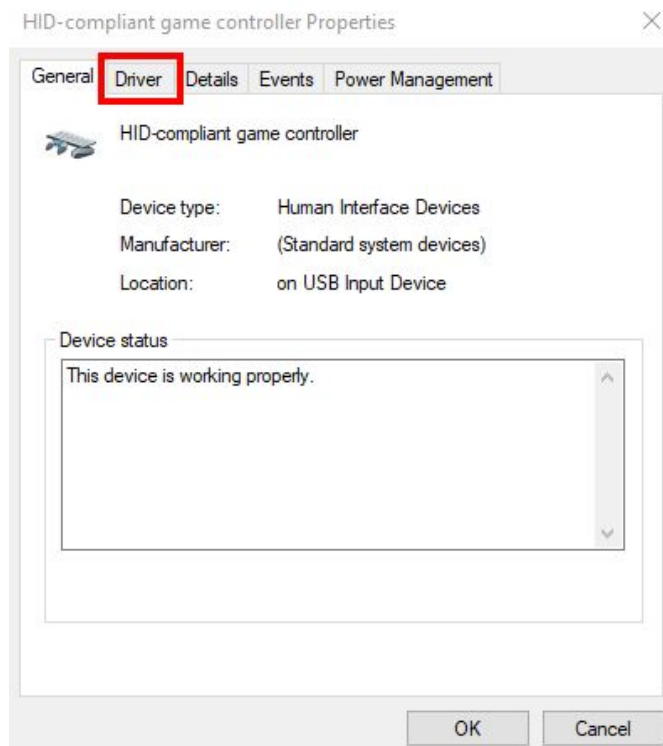
6. Click “Properties”



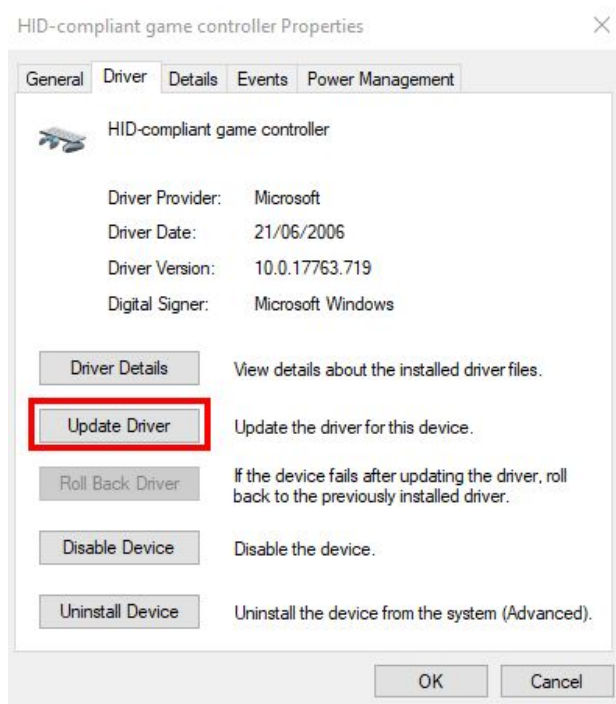
7. Click “Change Settings”



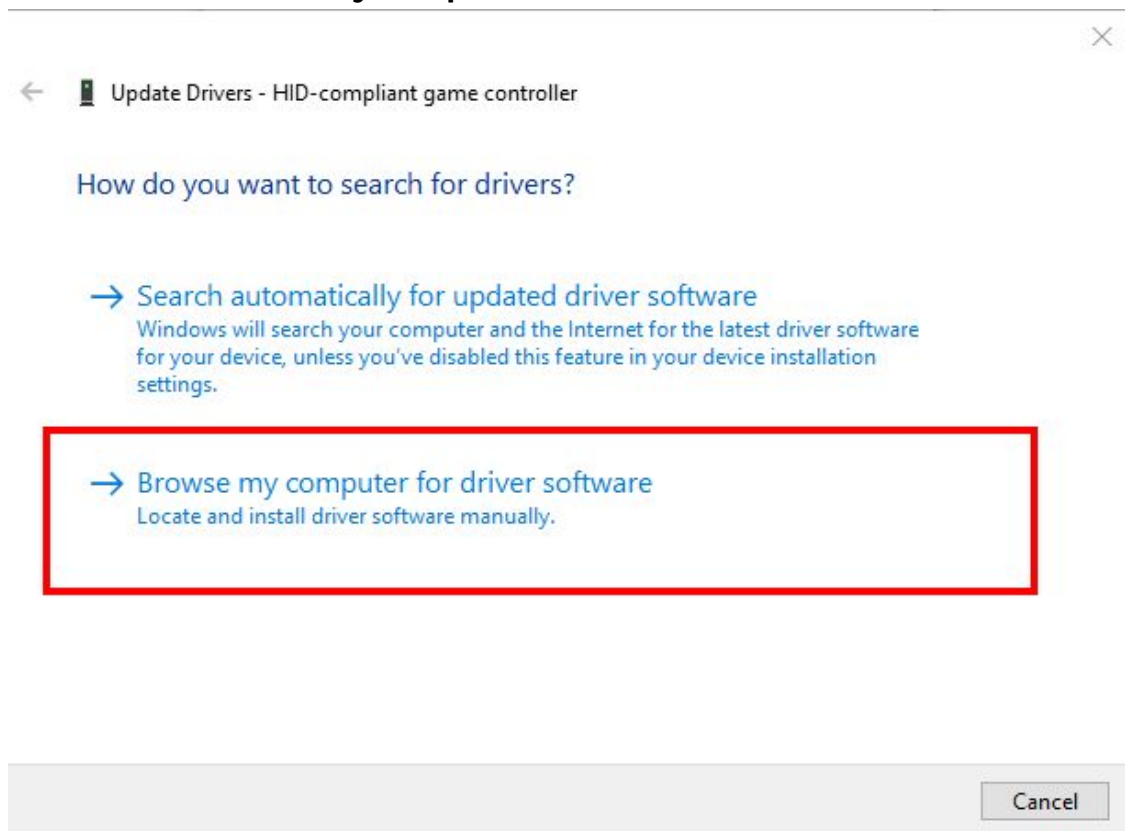
8. Click “Driver”



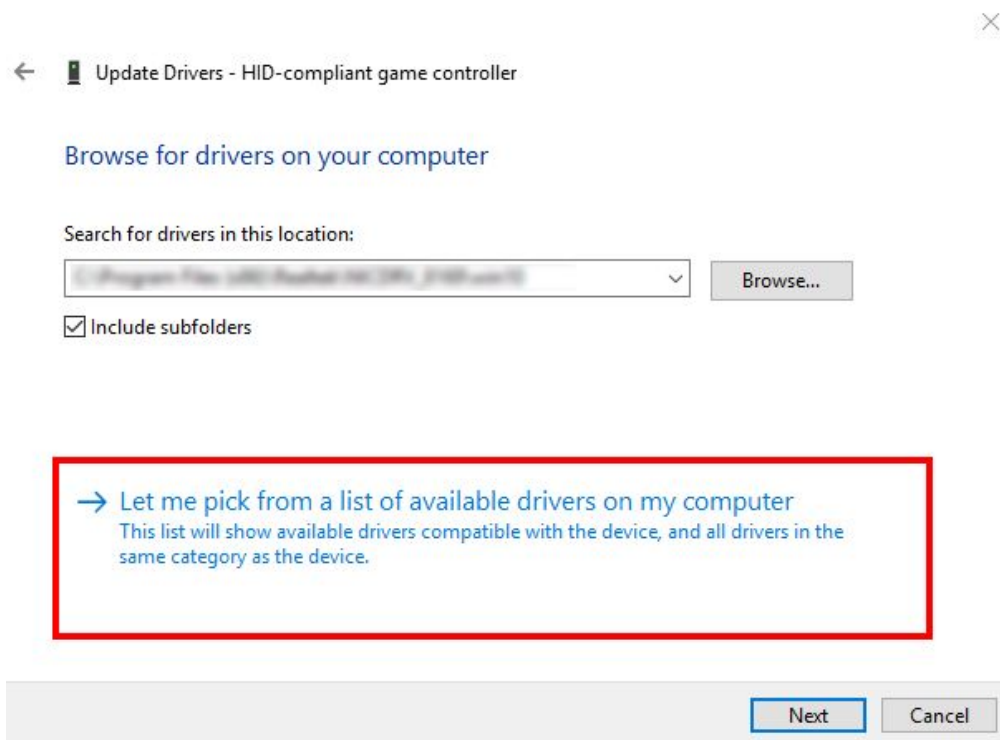
9. Click “Update Driver”



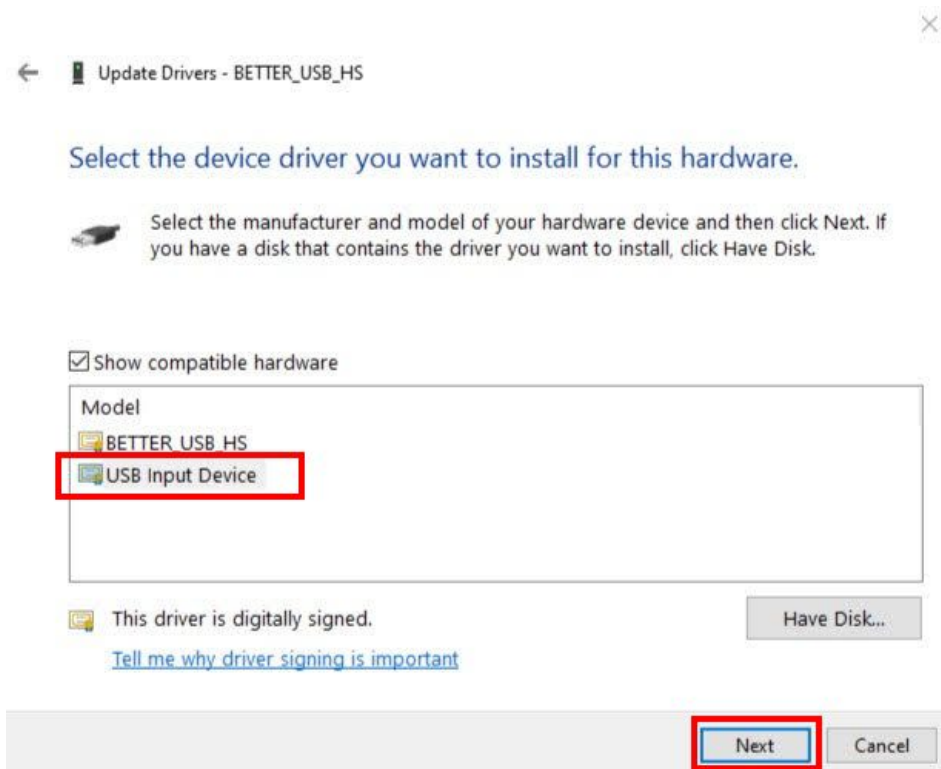
10. Click “Browse my computer for driver software”



11. Click “Let me pick from a list of available drivers on my computer”



12. Make sure you select the option “USB Input Device” instead of BETTER_USB_HS. Click “Next” to confirm.



**13. Windows will now attempt to install the driver for your controller.
Restart your computer before testing if your controller works
again.**